

Progressive Transformers for End-to-End Sign Language Production: Supplementary Material

Ben Saunders, Necati Cihan Camgoz, and Richard Bowden

University of Surrey
{b.saunders,n.camgoz,r.bowden}@surrey.ac.uk

In this supplementary material, we give further qualitative results for our Progressive Transformer SLP model. We share snapshot examples of produced sign pose sequences in Figures 1 and 2, showing (a) input spoken language alongside (b) produced sign pose sequence, with (c) ground truth pose and (d) original video provided for comparison.

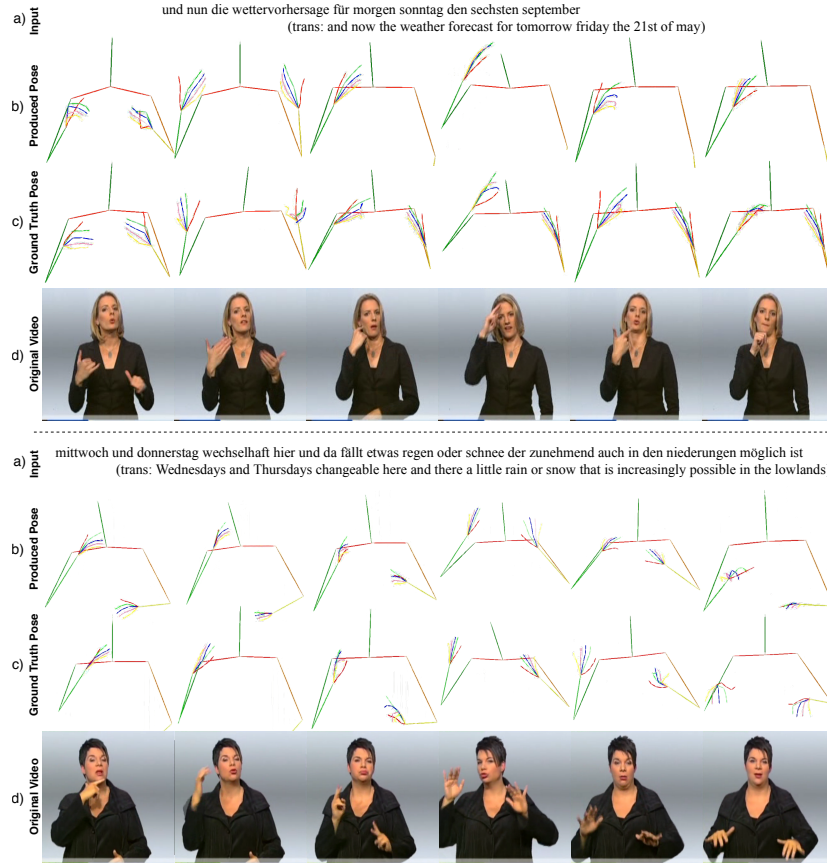


Fig. 1. Sign language production examples showing (a) spoken language input, (b) produced sign pose, (c) ground truth pose and (d) original video.

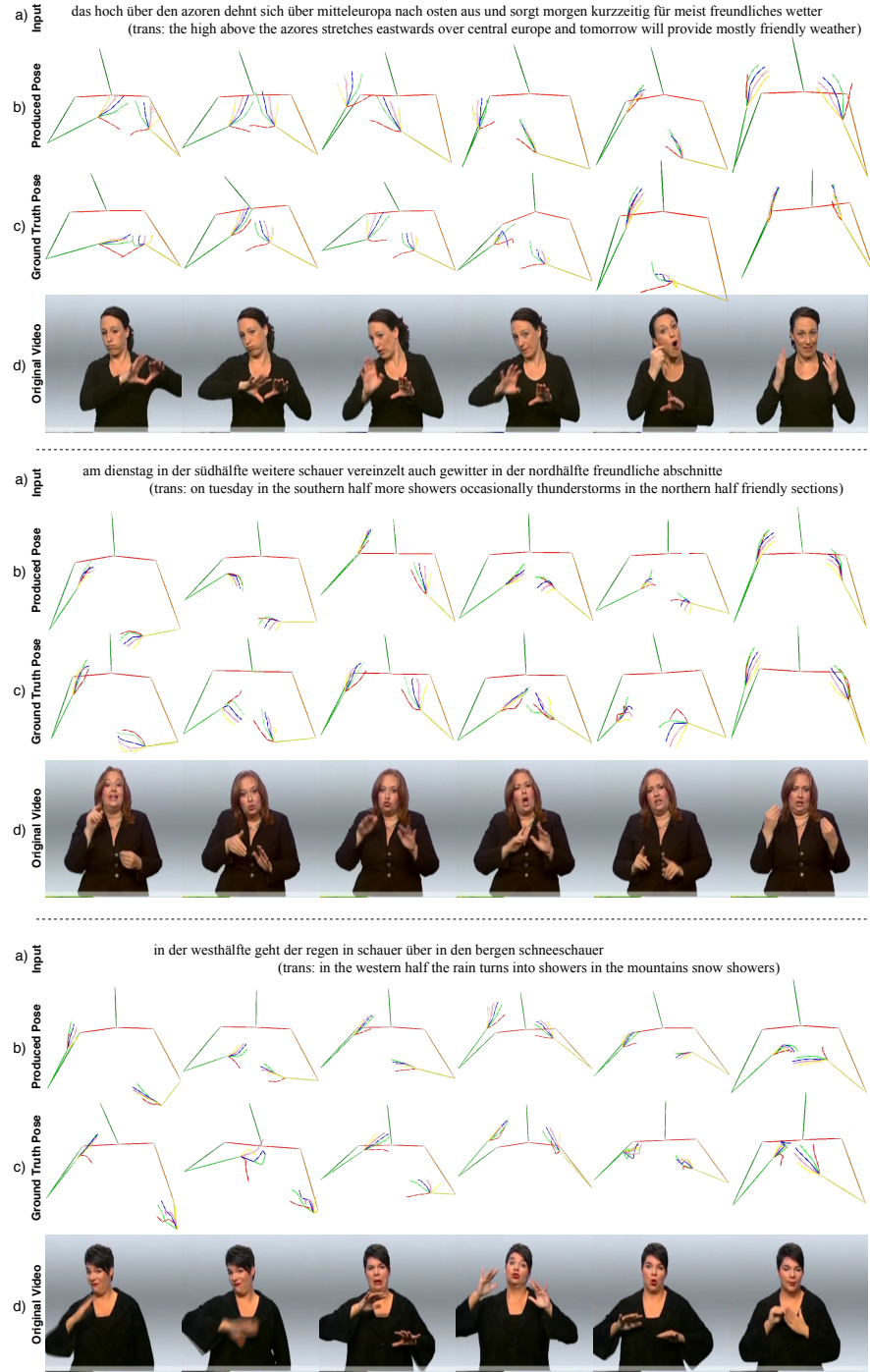


Fig. 2. Sign language production examples showing (a) spoken language input, (b) produced sign pose, (c) ground truth pose and (d) original video.